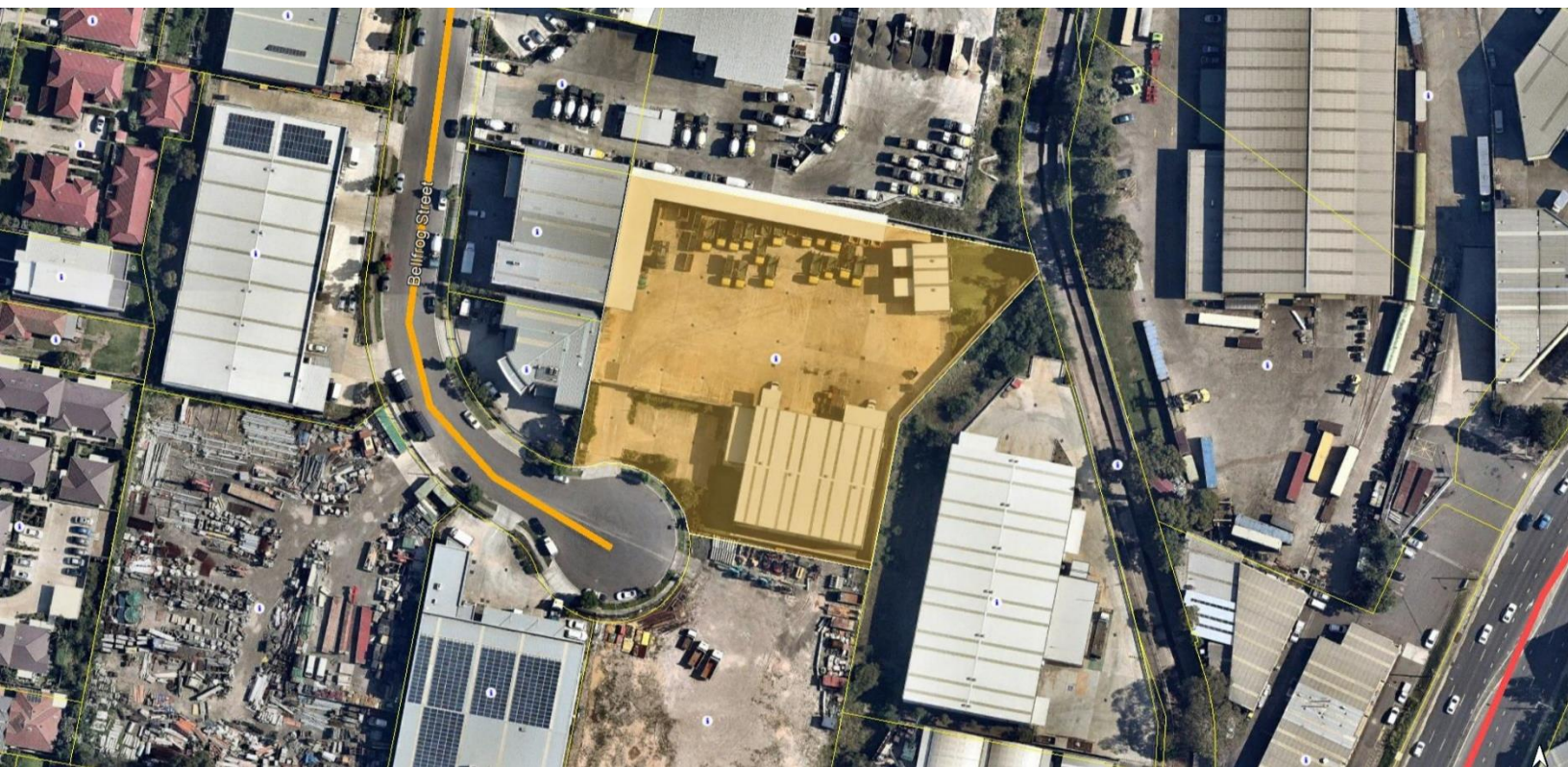


Aussie Industries

Pollution Incident Response Management Plan (PIRMP)

13 Bellfrog Street, Greenacre NSW

June 2024



Document information

Version: V6.0

Published: 13 June 2024

Prepared for

Aussie Industries

PO Box 156, Belfield NSW 2191

w: www.aussieindustries.com.au

Copyright notice

© Aussie Skips Recycling Pty Ltd 2024

Except as permitted by Australian copyright law, you may not use, reproduce, alter or communicate any content of this document, including photos, tables and diagrams, without the permission of the copyright owner.

Confidentiality notice

This document contains commercial-in-confidence information. Recipients and users of this document agree to hold the information presented within as confidential and agree not to disclose, or allow the disclosure, of this information to any other party, unless authorised, except to the extent required by law.

1 REVISION HISTORY				
Revision	Date	Details/comments	Review team	Authorisation
0	February 2019	Initial PIRMP preparation (DRAFT) for licence application	James Hammond	Emmanuel Roussakis
1.0	4 March 2020	Final PIRMP following grant of EPL	James Hammond	Emmanuel Roussakis
2.0	4 August 2020	Revised PIRMP following test and update of details.	James Hammond	Emmanuel Roussakis
3.0	2 August 2021	Revised PIRMP following test and update of details.	James Hammond	Emmanuel Roussakis
4.0	1 August 2022	Revised PIRMP following test and update of details.	James Hammond	Emmanuel Roussakis
5.0	12 June 2023	Update of PIRMP to check details and procedures. Limited test (desktop) carried out 1/6/2023 with supervisory staff). Annual training day scheduled for late August.	James Hammond CEO 4Pillars Environmental Consulting	Nansi Philips
6.0	13 June 2024	Update of PIRMP to check details and procedures. Limited test (desktop) carried out 30/5/2024 with management staff).	James Hammond CEO 4Pillars Environmental Consulting	Nansi Philips and Mitchell Palmer

2 PIRMP TEST RECORD				
Plan Version	Test Date	Test Type	Persons Involved	Test feedback and outcome
1.0	1 August 2020	Desktop	Entire Aussie Industry staff – drivers, yard, office, admin etc.	Maintained understanding among staff regarding incident classes and the relevant course of action for each. Improved understanding of the availability of the PIRMP and support from the Environmental Manager. Feedback broadly positive. No major deficiencies identified.
2.0	28 July 2021	Desktop	Aussie Industries Management team	Maintained understanding among staff regarding incident classes and the relevant course of action for each. Improved understanding of the availability of the PIRMP and support from the Environmental Manager. Feedback broadly positive. No major deficiencies identified.
3.0	14 May 2022	Desktop	Entire Aussie Industry staff – drivers, yard, office, admin etc.	Maintained understanding among staff regarding incident classes and the relevant course of action for each. Improved understanding of the availability of the PIRMP and support from the Environmental Manager. Feedback broadly positive. No major deficiencies identified.

Plan Version	Test Date	Test Type	Persons Involved	Test feedback and outcome
4.0	1/6/2023	Desktop drill	Aussie Industries Management staff.	Maintained understanding among staff regarding incident classes and the relevant course of action for each. Improved understanding of the availability of the PIRMP and support from the Environmental Manager. Feedback broadly positive. No major deficiencies identified.
5.0	30/5/2024	Desktop drill	Aussie Industries Management staff.	Maintained understanding among staff regarding incident classes and the relevant course of action for each. Improved understanding of the availability of the PIRMP and support from the Environmental Manager. Feedback broadly positive. No major deficiencies identified.

Table of contents

1	Revision history	3
2	PIRMP test record	3
3	Abbreviations	6
1.	Introduction.....	7
3.1	Legislative Requirements and Definitions	7
3.2	Objectives	8
3.3	Purpose	8
3.4	Availability of PIRMP	8
3.5	Site Details	8
4	Hazard Assessment	9
4.1	Description and likelihood of hazards	9
4.1.1	Hydrocarbons.....	10
4.1.2	Chemicals	11
4.1.3	Illegal Wastes	11
4.1.1	Dust	12
4.1.1	Contaminated water	12
4.1.2	Fire	12
4.1.3	Flooding.....	12
4.2	Inventory of pollutants	12
4.3	Safety equipment	12
4.4	Pre-emptive actions to be taken	13
4.4.1	Hydrocarbons.....	13
4.4.2	Chemicals	13
4.4.3	Illegal wastes	14
4.4.4	Dust	14
4.4.5	Contaminated water	14
4.4.1	Fire	14
4.5	Training requirements	14
4.6	Minimising harm to persons on the premises	15
4.7	Maps	15
5	Actions to be taken during and after an incident	15
5.1	During an incident	15

5.2	Post-incident.....	16
5.2.1	Internal reporting.....	16
5.2.2	External reporting	16
5.3	Review and update the PIRMP	16
6	Responsibilities and Contact Information	17
7	PIRMP Maintenance and review	18
7.1	Testing the PIRMP.....	18
7.2	Testing procedures	18
7.2.1	Desktop simulation	18
7.2.2	Pollution incident drill.....	19
7.2.3	PIRMP Review	19
	Attachment A	24

List of Tables and Figures

Table 1: The risk ratings are based on uncontrolled likelihood and consequence of each incident and do not take into account the proactive controls outlined later in this document. Note that the descriptions for 'incident types' are broad and there are likely to be several sub-categories for each incident (refer to the Procedure for further details).	10
Table 4: Authority contacts that requiring notification during a pollution incident.	17
Table 5: Contact details for persons and organisations relevant to pollution incident and emergency response.	18

3 ABBREVIATIONS

EPA – Environmental Protection Authority

EPL – Environmental Protection Licence

SITE SUPERVISOR – General manager

PIRMP – Pollution Incident Response Management Plan

POM – Plan of management

SCC – Strathfield City Council

SS – Site operations manager

Important note

This document is made up of two parts:

1. The Pollution Incident Response Management Plan (the Plan); and
2. The Pollution Incident Response Procedure (the Procedure).

The Plan provides detail regarding the legislative framework, site features, hazard identification, risk assessment, monitoring, testing, reporting and ongoing improvement. The intended audience for this part includes the Company Directors, General Manager (SITE SUPERVISOR), Site Supervisor (SS), advisors and regulatory authorities.

The Procedure provides detail on the process to be followed in the event of a pollution incident. The intended audience for this part is the people directly involved in the day-to-day operations of the site, including the General Manager, site supervisors, staff and (where relevant) contractors.

All staff, at a minimum, must read and understand the Procedure, provided at Attachment A.

1. INTRODUCTION

3.1 LEGISLATIVE REQUIREMENTS AND DEFINITIONS

The holder of an environment protection licence (EPL) is required to prepare and maintain a Pollution Incident Response Management Plan (PIRMP), as per Part 5.7A of the *Protection of the Environment Operations Act 1997* (POEO Act). This requirement was added in 2011, via the *Protection of the Environment Legislation Amendment Act 2011* (POELA Act). Prior to this, licence holders were still required to notify pollution incidents that would, or were likely to, cause material harm to the environment; however, they were not required to prepare and maintain a specific plan to mitigate risk. In addition to preparing the PIRMP, the licence holder must keep a copy of the plan at the premises (Section 153D of the Act) and 'test' the plan, in accordance with clause 98E of the *Protection of the Environment Operations (General) Regulation 2009* (POEO Regulation).

In preparing and reviewing the PIRMP, it is important to reiterate the definition, objectives and purpose of the Plan, as detailed in the *NSW EPA Environment Guidelines: Preparation of pollution Incident Response Management Plans 2012* (the Guidelines). This serves to reinforce to all personnel, the importance and role of the PIRMP.

As per the definition in the POEO Act dictionary, a 'pollution incident' is:

"an incident or set of circumstances during or as a consequence of which there is or is likely to be a leak, spill or other escape or deposit of a substance, as a result of which pollution has occurred, is occurring or is likely to occur. It includes an incident or set of circumstances in which a substance has been placed or disposed of on premises, but it does not include an incident or set of circumstances involving only the emission of any noise."

As per Section 148 of the POEO Act, notification of a pollution incident must occur if *"material harm to the environment is caused or threatened"*. 'Material harm' is defined in Section 147 of the POEO Act as:

- a) *"harm to the environment is material if:*
 - i. *it involves actual or potential harm to the health or safety of human beings or to ecosystems that is not trivial, or*
 - ii. *it results in actual or potential loss or property damage of an amount, or amounts in aggregate, exceeding \$10,000 (or such other amount as is prescribed by the regulations), and*

b) loss includes the reasonable costs and expenses that would be incurred in taking all reasonable and practicable measures to prevent, mitigate or make good harm to the environment.

2) For the purposes of this Part, it does not matter that harm to the environment is caused only in the premises where the pollution incident occurs.”

Therefore, **not all pollution incidents are notifiable**. This is made clear in the flow chart at the beginning of the Procedure.

3.2 OBJECTIVES

The objectives of a PIRMP, as set out in the Guidelines are to:

- Ensure the comprehensive and near immediate communication of a pollution incident to staff at the premises, the Environment Protection Authority (EPA), other relevant authorities specified in the Act (Strathfield Council, NSW Ministry of Health, WorkCover NSW, and Fire and Rescue NSW) and stakeholders within the community who may be affected by the impacts of the pollution incident);
- Minimise and control the risk of a pollution incident at the facility by requiring identification of risks and the development of planned actions to minimise and manage those risks; and
- Ensure that the PIRMP is properly implemented by trained staff, identifying persons responsible for implementing it, and ensuring that the plan is regularly tested for accuracy, currency and suitability.

3.3 PURPOSE

The purpose of a PIRMP is to improve the management of pollution incidents and facilitate better coordination with the relevant response agencies. The PIRMP is to provide reference for the procedures and responsibilities for pollution incident response, and this extends to the ongoing management for the prevention and mitigation of any such incident.

The Aussie Skips Recycling PIRMP (the Plan) works with and is complementary to:

- The Pollution Incident Response Procedure (the Procedure);
- The Plan of Management (POM); and
- The Site Safety and Environmental Rules and Site Induction.

Together, these documents establish the framework that helps protect the environment, as well as the health, safety and well-being of all persons and stakeholders associated with the Aussie Skips Recycling Greenacre site.

3.4 AVAILABILITY OF PIRMP

A copy of the PIRMP will be maintained in its written form at the licensed premises so that it is readily available for implementation and can be provided to any authorised EPA officer on request. A copy of the PIRMP will be made available on the Aussie Industries website. If for any reason the plan is unavailable at the website and a person has made a written request the PIRMP will be provided without charge.

3.5 SITE DETAILS

The subject site is located at 13 Bellfrog Street, Greenacre, which is also identified as cadastral Lot 15 in DP 113212. Aussie Skips Recycling is the current occupant of the premises under a 10-year lease scheduled for renewal on 20 June 2029.

The NSW EPA has issued an Environment Protection Licence (EPL) No. 21389 for the site which allows for ‘Waste Storage’, subject to conditions. Condition L3.3 of the EPL stipulates that the amount of materials to be handled shall not exceed 199,000 tonnes in any 12 month period and the amount of waste to be stored on site at any one time is to be less than

8,000 tonnes. The Development Consent (DC) (DA2012/175), issued by Strathfield City Council on 19 February 2013, allows for use of the premises as a materials handling yard.

The site covers an approximate area of 6,500 m² and is zoned IN1 – General Industrial (*Strathfield LEP, 2012*). Key site features include driveways and carparks, a temporary weighbridge, a workshop and a storage warehouse. The workshop will be used for the maintenance and servicing of company vehicles. The warehouse will be fitted out for materials storage.

The land immediately north of the site is occupied by a concrete batching plant (Hanson). The land immediately east of the site is occupied by a reinforcing steel fabricator and distributor (AUSREO). The land immediately to the west has also been developed for industrial use (including for the storage and processing of meat products). Other industrial buildings have been constructed on the allotments to the south with vacant sites subject to ongoing development. The nearest residential receivers are located in Wentworth Street to the west and Juno Parade to the South. The site is accessed from Bellfrog Road via Wentworth Street and principal access routes for the Central Business Park are Roberts Road, Norfolk Road and Wentworth Street.

Further details regarding the site and operations can be found in the site ‘Plan of Management’ (POM), approvals and associated documents, and other environmental management plans.

4 HAZARD ASSESSMENT

4.1 DESCRIPTION AND LIKELIHOOD OF HAZARDS

Aussie Recycling Greenacre undertakes receipt, segregation and export of rock, soil, aggregates and other similar materials.

The main hazards that are likely to cause a pollution incident are contaminated water storages, hydrocarbons, chemicals and illegal wastes.

Table 1 below provides an introductory risk assessment for pollution incidents that may occur at the site. Section 4.1 provides further detail on these hazards and their likelihood and introduces possible controls, which are expanded on in Section 4.4 (Pre-emptive actions).

Hazard	Activity/Event	Potential Impact Type(s) ¹	Likelihood (uncontrolled) ²	Consequence (uncontrolled) ³	Risk Rating ⁴
Hydrocarbons	Diesel tank – catastrophic failure or damage	Surface water, land, air quality, human health	Unlikely	Major	3
	Diesel tank – minor leak	Surface water, ground water, land	Unlikely	Minor	1
	Mobile plant/vehicle fuel line leak or failure	Surface water, ground water, land	Moderate	Moderate	4
	Mobile plant/vehicle – other minor spill or leak	Surface water, ground water, land	Moderate	Minor	2

¹ These are examples of systems or entities that may be impacted by the incident. Examples include surface water, ground water, air quality and human health. This list is not exhaustive and will vary between incidents.

² Qualitative categories of likelihood used for this assessment are likely, moderate and unlikely.

³ Qualitative categories of consequence used for this assessment are major, moderate and minor.

⁴ The risk rating is a numerical rating from 1 to 9 (lowest to highest), based on the likelihood x consequence.

Hazard	Activity/Event	Potential Impact Type(s) ¹	Likelihood (uncontrolled) ²	Consequence (uncontrolled) ³	Risk Rating ⁴
	Hydro-carbon storage (container bund) - leak	Surface water, ground water, land	Unlikely	Moderate	2
Chemicals	Chemical – minor spill (<20L)	Surface water, human health	Likely	Minor	3
	Chemical – major spill (≥20L) or immediate threat to surface water	Surface water, land, air quality, human health	Unlikely	Major	6
Illegal Wastes	Illegal waste – nonhazardous solid prohibited waste	Land, air quality, human health	Moderate	Minor	2
	Illegal waste – hazardous solid prohibited waste	Surface water, ground water, land, air quality, human health	Moderate	Major	6
	Illegal waste – liquid waste	Surface water, ground water, land, human health	Unlikely	Major	3
Dust	Visible offsite movement	Air quality, human health	Moderate	Moderate	4
Contaminated water	Off-site discharge of contaminated water	Surface water, ground water, land	Unlikely	Moderate	2
Fire	Minor fire	Air quality, human health	Unlikely	Moderate	2
	Major fire	Air quality, land, human health	Unlikely	Major	3

Table 1: The risk ratings are based on uncontrolled likelihood and consequence of each incident and do not take into account the proactive controls outlined later in this document. Note that the descriptions for 'incident types' are broad and there are likely to be several sub-categories for each incident (refer to the Procedure for further details).

4.1.1 Hydrocarbons

Description of hazard

The facility has a 20,000-litre diesel fuel storage tank which is located in the eastern section of the site. The self-bunded design reduces the risk of puncture and containment failure. Mobile and fixed plant present at the site that require diesel include trucks, excavators, forklifts, loader and bobcat. These items of plant are involved in transferring, placing, and processing of waste. The most likely hazard associated with the operation of this equipment is a spill from a broken oil or fuel line which would result in the petroleum product being discharged onto land and/or entering the water treatment system.

Likelihood of an incident

The likelihood of a significant petroleum spill occurring is low. The largest quantity of petroleum product stored on the site is the diesel fuel tank, stored in the eastern area of the site. In this location, it is not likely to be accidentally hit or damaged by vehicles moving on site. The diesel fuel tank is self-bunded. The tank is not under pressure and therefore the rate of escape through a breach will only be moderate, except in the event of a catastrophic failure. Failure to maintain spill kits and adequately train staff on how to respond to this type of incident could also increase the severity of potential impacts to land and/or water. Failure to regularly inspect the diesel storage tank, mobile and fixed plant for faults and leaks could furthermore increase the likelihood of this type of incident occurring.

The quantity of diesel fuel stored in the fuel tanks of the mobile and fixed plant is relatively small. If it were to escape, in most circumstances the incident would not likely to cause any significant harm to the environment or the personnel at the site, if internal response and clean up procedures were followed.

4.1.2 Chemicals

Various chemicals are stored at the facility including but not limited to lubricants and oils, paints and solvents, and industrial and domestic cleaners. These are generally bunded and stored for use within the workshop area. The quantity of products used for cleaning the office and toilet areas is very small and not considered a hazard to the environment or personnel. The Aussie Industries 'WHS Management System Manual' provides further detail on how to handle, store and dispose of hazardous chemicals to minimise the risk of adverse health effects to workers, customers, contractors and the public.

The likelihood of harm to human health and the environment caused by a chemical spill is low. Ensuring quality housekeeping through the storage of lubricants and oils, paints and solvents, and industrial and domestic cleaners in a bunded area, maintenance and proper use of spill kits, regular inspections and staff training would further reduce this likelihood.

The quantity of domestic liquid cleaning products stored on site at any time would be no more than 10 litres. The likelihood of there being an escape of cleaning liquid is considered low. If a spill was to occur, the risk of material harm to the environment and the personnel is low. Staff are encouraged to observe safety disclaimers and instructions provided on packaging and MSDS.

4.1.3 Illegal Wastes

There is a risk of vehicles disposing of waste at a waste facility to be carrying illegal waste (i.e. waste not permitted to be accepted at the facility). This type of waste can only be described as material that cannot be accepted at the licensed facility and therefore must be 'turned away'.

There is a risk of vehicles disposing of waste at a waste facility to be carrying illegal waste (i.e. waste not permitted to be accepted at the facility).

The illegal material could be a full vehicle

The illegal material could be a full vehicle load or it could consist of illegal waste mixed with permitted waste. In either instance, the entire load of waste must be treated as unsuitable and managed appropriately. Where possible and at the discretion of the SITE SUPERVISOR or their delegate, the illegal material must be separated from the approved material and taken off site. If it is not possible to separate the illegal material, the whole load must be removed from the premises.

Aussie Industries' 'Plan of Management' provides further detail on waste management procedures, including the handling of illegal wastes.

Delivery drivers have a responsibility to notify the weighbridge accurately the type of waste they are transporting.

The other step in the detection and inspection process is at the manual sorting stage where site personnel inspect the waste to ensure it does not contain materials that cannot be accepted. Considering the checking and inspection controls in place there is a low residual risk that illegal waste will enter the site.

4.1.1 Dust

The main sources of dust generation on site are the loading and unloading of wastes, static waste storage stockpiles and movements of mobile plant. The likelihood of dust leaving the site is low, if all controls are functioning as intended. However, this could increase during extreme weather events (i.e. hot, windy days) and if the site is unattended.

4.1.1 Contaminated water

The Site is not permitted to discharge surface water, except in extreme weather conditions.

The potential for water pollution is expected to come from the mixing of surface water with waste materials on site. By reducing the amount of contact that surface/rainwater has with waste materials, potential for pollution of water will be reduced. This will be achieved by storing materials undercover where possible.

4.1.2 Fire

The Plan of Management contains procedures relating to the management of fire risk. Due to the nature of the waste materials accepted on site, there is a low risk of fire. This was confirmed by the 25 March 2020 Fire Risk Management Advice prepared by Core Engineering for the site, which concluded that no areas on the site are used for the stockpiling of >50 m³ of combustible material. Implementation of pre-emptive controls will further reduce any risk posed.

4.1.3 Flooding

The site is located west of Coxs Creek. This waterbody has been extensively modified overtime and is largely a concrete lined stormwater channel that flows into the Cooks River. The risk of flooding on-site is low if stormwater collection and conveyance systems are properly and regularly maintained. The consequences of any flooding would likely be limited to on-site (e.g. disruptions to operations, property damage, etc). Failure of stormwater collection and conveyance systems may cause pollution of receiving waters.

4.2 INVENTORY OF POLLUTANTS

The identification, handling, storage and disposal of chemicals and hazardous substances at Aussie Industries is guided by a series of Material Safety Data Sheets (MSDS) as set out in the 'WHS Management System Manual'. A register of all MSDS is kept in the Site Office and is readily accessible for all personnel with potential exposure to any such substances.

4.3 SAFETY EQUIPMENT

Safety equipment and devices used at Aussie Recycling to minimise risks to human and environmental health, and to contain or control a pollution include fire extinguishers, first aid kits, spill kits and bunds, Traffic control cones, barriers and signage. Regular inspections should be scheduled for these items, which should be serviced and maintained in accordance with the relevant standards and manufacturer's instructions. Regular training should also be carried out to ensure that all employees can operate the equipment.

4.4 PRE-EMPTIVE ACTIONS TO BE TAKEN

The most effective method of preventing incidents occurring is to have in place an effective system of inspections and maintenance. The COO or their delegate will ensure that site inspections are carried out regularly and plant and equipment is inspected by the operators prior to the commencement of work. The checklists and inspection procedures that will be developed for the site include:

- Regular Site Inspections;
- Vehicle and Plant maintenance records;
- Weighbridge Records;
- Excluded Waste Reports; and
- Environmental audits.

The information provided below outlines the pre-emptive actions to be taken in relation to each category of hazard.

4.4.1 Hydrocarbons

Diesel fuel is stored in an above-ground self-bunded (double skinned) storage tank and in the smaller fuel tanks of the various pieces of operational plant. Spills of diesel fuel could occur either during the daily operation or overnight while the plant is not operational.

The main site diesel tank is inspected daily as part of the Site Supervisor (or their delegate's) operational responsibilities. If the tank is determined to be faulty or damaged in any way, the fuel will be pumped from the tank and the tank removed for repair or replacement.

The plant and equipment are checked daily by the operators as part of their daily start-up and inspection routine. All plant operators are trained to check and inspect their plant and equipment before they commence work.

Should an operator find a fault with the any part on the plant, including a leaking fuel line, it is reported to the SITE SUPERVISOR to be rectified. A leaking fuel line or other issue that may result in a hydrocarbon spill is either repaired, or replaced, as soon as practicable.

Any diesel fuel that has spilled is isolated and cleaned up. Spill kits are located in the workshop and main yard.

Oil spills may occur due to faulty or broken hydraulic lines on mobile plant and equipment.

The plant and equipment is checked daily by the operators as part of their daily start-up and inspection routine. All plant operators are trained to check and inspect their plant and equipment before they commence work.

Any oil spill will be isolated and cleaned up using the spill kits. In the event the operator finds a faulty or broken hydraulic line, the machinery is parked up for repair, the SITE SUPERVISOR is notified, and the fault is addressed as soon as practicable.

4.4.2 Chemicals

Chemicals will be stored undercover and bunded where practicable. Application and storage of chemicals will occur strictly according to the corresponding safety data sheet. In general, good housekeeping and tidy work areas will help to prevent accidents and spills.

4.4.3 Illegal wastes

All waste entering the site must comply with the conditions set out in the Environment Protection Licence. The site's Plan of Management and associated procedures provide detail on how waste incoming is assessed. In general, the weighbridge operator asks the truck driver for information concerning the waste being delivered to the site. The weighbridge operator observes and records all loads of material entering the site, including waste and other operational materials. The material is again inspected by the plant operator and site workers when the material or waste is unloaded.

If illegal waste is found on the site, it is immediately isolated, and steps are taken to have it removed from the site and taken to a waste facility approved to accept it. If the illegal waste is detected at the weighbridge, the truck is rejected from the site, and an entry is made in the 'Rejected Loads Register'.

4.4.4 Dust

Dust generation will be managed by the operation and proper maintenance of the dust suppression sprinkler system, the wetting down of stockpiles, and the sweeping of trafficable, impervious surfaces while damp. All loads will be covered during transport.

4.4.5 Contaminated water

An engineered treatment drain, consisting of multiple mechanisms is in place at site to remove pollution. The devices are in series and overlap in the pollutants they target for removal. The system is also designed to satisfy requirements for removal rates based on the Strathfield City Council Stormwater Quality Control. A maintenance procedure has also been developed for the system and will be followed as required. The event of extreme flooding could increase the potential for discharge.

4.4.1 Fire

The Site handles waste that is non-combustible and the risk of fire is low.

Flammable and combustible liquids and gases will be stored in an undercover area on bunds where practicable. Refuelling is also to be undertaken only in designated areas. Spill kits will be provided and maintained by staff who are trained in use of the equipment. Safety data sheets will be reviewed to identify appropriate fire prevention and fighting procedures. Good housekeeping and maintenance of a tidy work area will also prevent spills and accidents that may increase the risk of a fire incident. Fire extinguishers will be provided across the site and will be trained in their use. Staff and visitors to site will be instructed of the emergency procedures and evacuation points.

4.5 TRAINING REQUIREMENTS

The objectives of the training program that is to complement this plan is to ensure that all site staff are aware of the contents of the PIRMP, such that they understand environmental and safety issues in the workplace and are aware of their responsibilities in the event of a pollution incident. Information is to be disseminated through site inductions, toolbox talks and ongoing training.

The SITE SUPERVISOR or their delegate is responsible for the administration of materials and maintenance of records for all inductions and ongoing training. At a minimum, records of training will contain details of who facilitated and received the training, when the training was undertaken, and what the training involved. Where applicable, test scores and simulation outcomes should also be carefully noted.

Contractors and visitors to the site will also be subject to inductions and ongoing training as deemed appropriate by the SITE SUPERVISOR or their delegate. Details and copies of any relevant licenses, certificates and/or qualifications held by

employees and contractors will also be recorded and maintained by the SITE SUPERVISOR or their delegate. It is the responsibility of all employees and contractors working on the site to work in a safe manner and to look after the interests of their fellow workers.

Inductions and ongoing training requirements should be routinely reviewed and revised as deemed appropriate by the SITE SUPERVISOR or their delegate. Throughout this process, considerations should be made for but not limited to changes in procedures and regulations, as well as any errors or deficiencies in job performance and in reporting.

Desktop simulation and pollution incident drill testing procedures, as required under Section 98(E) of the POEO Regulation and outlined in Section 7, provide an interactive training experience for employees. Scenarios are designed to be reflective of an incident that may be encountered on site, however, are implemented in a controlled and hazard free environment.

4.6 MINIMISING HARM TO PERSONS ON THE PREMISES

The best and most effective method for minimising harm to all persons on the premises, including employees, visitors and subcontractors, is through education, training and provision of appropriate resources to control hazards. All persons working on the site, employees and subcontractors, and persons visiting the premises, are required to attend an induction programme. All employees and regular subcontractors must attend the regular toolbox meetings, where they are openly encouraged to raise issues of concern. Employees, sub-contractors and visitors will be provided with and instructed on the correct use of appropriate personal protective equipment.

Minimising harm also comes through development and training programmes which employees are encouraged to commit to. Training often takes the form of on-the-job training of employees in the use of plant and equipment as well as reinforcement of the various management plans and systems in place.

Aussie Skips Recycling only employ people who are experienced in recycling operations and have qualifications for the plant they operate. While training and development are essential, appropriate signage is also important. Given the operation of heavy machinery, clear directional and safety signs are important.

Aussie Skips Recycling employees and sub-contractors will be instructed to contact the Site Operations Manager immediately if they are in doubt over any part of this PIRMP or their responsibilities.

4.7 MAPS

Figure 1 shows the site in the context of surrounding land zoning. This map should be used to identify which land users are likely to be most sensitive to different types of pollution incidents. Figure 2 provides a satellite image, with key site features marked. This plan is consistent with the plan provided to the NSW EPA and is referred to in the site licence.

5 ACTIONS TO BE TAKEN DURING AND AFTER AN INCIDENT

5.1 DURING AN INCIDENT

Important note: Actions taken during and after a pollution incident will vary depending on the nature of the pollutants and severity of the incident. The Pollution Incident Response Procedure (the Procedure) contains a simple flow chart, for use when a pollution incident occurs. The Procedure also contains all relevant contact details for authorities and other stakeholders. The SITE SUPERVISOR or their delegate must identify which incident response procedure is best aligned with the one at hand and respond accordingly. Variations to the recommended response detailed in the critical information summary may be authorised and carried out at the discretion of the SITE SUPERVISOR. The Procedure is provided as Attachment A to this Plan. This section provides a high-level overview of the procedure.

Any employee or contractor who suspects or confirms that a pollution incident has or is about to occur, shall immediately notify the relevant supervisor or the SITE SUPERVISOR. If the employee is trained to respond to the incident, they may do so, provided that someone else is on hand to raise the alarm. Supervisors should notify the SITE SUPERVISOR or their delegate of the incident immediately.

The SITE SUPERVISOR or their delegate must notify the General Manager if there is a risk of material harm to the environment, if there is an immediate risk to human health or property (on or off-site) or risk to environmental amenity (off-site). Section 148 of the POEO Act states relevant regulator(s) and management authorities must also be notified if there is a risk of material harm to the environment. Stakeholders may also need to be notified of an incident; however, this is at the discretion of the General Manager (unless it is required by the regulator or relevant management authority).

Information that should be provided to the EPA, or other regulators, includes:

- the time, date, location, nature and duration of the event;
- location of the place(s) where pollution is occurring or is likely to occur;
- nature, quantity and concentration of any pollutants involved;
- suspected cause of the incident;
- actions taken to control the situation;
- actions taken to mitigate any environmental harm and/or environmental nuisance caused by the event;
- proposed action(s) to prevent a recurrence of the event; and
- any other information that may be requested by regulatory authorities.

5.2 POST-INCIDENT

5.2.1 Internal reporting

A 'post-incident report' is to be completed by all staff involved in a pollution incident, and forwarded to the SITE SUPERVISOR or their delegate prior to leaving the site that day. Employees involved in a pollution incident are not permitted to leave the site unless approved to do so by Aussie Skips management, or a representative of the Emergency Services (if in attendance).

The SITE SUPERVISOR or their delegate is responsible for ensuring that all required information has been collected, and that all concerned parties have completed a report. The SITE SUPERVISOR or their delegate must also complete a separate 'post-incident report'. A hard and soft copy of each post-incident report is to be retained.

5.2.2 External reporting

The SITE SUPERVISOR or their delegate will prepare a report that satisfies regulator reporting requirements in a timely manner following a regulator-notifiable incident or stakeholder-notifiable incident. Once this report has been reviewed and approved, it is to be forwarded to the EPA, other relevant regulators and management authorities on behalf of the company. This is to occur within the timeframes set out by the relevant regulators. Any follow up information requested by the regulator(s) is to be authorised by the General Manager and provided in a timely manner.

5.3 REVIEW AND UPDATE THE PIRMP

Following any incident (other than a non-notifiable incident), the PIRMP must be tested (and revised if necessary), as per Regulation 98E(2b) of the POEO Regulation. Testing of a PIRMP following an incident must assess, in the light of that incident, whether the information included in the plan is accurate and up to date and the plan is still capable of being implemented in a workable and effective manner. If the answer to this is 'no', then the PIRMP must be revised to address any gaps or deficiencies identified.

6 RESPONSIBILITIES AND CONTACT INFORMATION

The following section presents a brief outline of key positions and responsibilities associated with implementation of the PIRMP at Aussie Skips Recycling.

Overall site management and compliance, as well as the implementation, testing, training and reviewing the effectiveness of the PIRMP is the responsibility of the SITE SUPERVISOR or their delegate, with assistance from advisory managers, employees and regular contractors. The SITE SUPERVISOR or their delegate will ensure that all employees read and understand the Procedure and have been adequately inducted and trained. The SITE SUPERVISOR or their delegate will also ensure all relevant persons are re-trained if the PIRMP is altered in a substantial way

Employees, contractors and visitors inducted to the site accept a duty of care and the responsibility to ensure that any accidents, incidents, and near misses are reported through the correct channels. During an emergency or incident, they are obligated to follow procedures and authorised instruction, provided this does not place them at any additional risk. As such, they must commit to understanding the PIRMP and emergency plans.

Regulator notification of any pollution incident causing or threatening to cause material harm is required under Section 140 of the POEO Act. The notification protocol described below should be enacted as soon as practicable after any person on the premises becomes aware of the incident. Firstly, call '000' if the incident presents an immediate threat to human health or property. Fire and Rescue NSW, the NSW Police and the NSW Ambulance Service are the first responders. Following this, or if the incident does not require any of these agencies to control or contain the incident, notify the relevant authorities as shown in the table below. Contact details for other relevant persons and organisations are summarised in Table 2.

Authority	Description	Contact information
NSW Environment Protection Authority (EPA)	Main environmental regulator for sites with an EPL	131 555
Strathfield City Council	Local government environmental regulator	9748 9999
NSW Ministry of Health	Camperdown public health unit	02 9515 9420
SafeWork NSW	WHS authority	13 10 50
Fire and Rescue NSW	Emergency services – fire, hazardous materials etc.	1300 729 579 (or 000)

Table 2: Authority contacts that requiring notification during a pollution incident.

Contact	In case of...	Number
Co Chief Operations Officer (Nansi Philips)	Any pollution incident or potential pollution incident or emergency EXCEPT for non-notifiable incidents	0404 029 100
Co Chief Operations Officer (Mitchell Palmer)	Any pollution incident or potential pollution incident or emergency EXCEPT for non-notifiable incidents	0405 865 815
Environmental Advisor (James Hammond)	Any pollution incident or potential pollution incident or emergency	0423 196 069
Site Operations Manager (Site Supervisor) (Leon Roussakis)	Any pollution incident or potential pollution incident or emergency	0422 266 772
Legal advisor (Luke Walker, MinterEllison)	Any pollution incident or potential pollution incident or emergency EXCEPT for non-notifiable incidents	0421 587 327

Contact	In case of...	Number
Emergency services (Ambulance, Fire, Police)	Time-critical life or property threatening emergencies	000 or 112 from mobile
State Emergency Service	Assistance required in recovering from storm events	132 500
Lakemba Fire Station	Assistance with fire or pollution incident response	02 9759 5252
Strathfield Police Station	To report non time-critical crime, such as vandalism or illegal dumping	02 9746 7084
Telstra Call Connect (Telstra phones only)	For connection to key contacts and phone numbers	1234
Sydney Water	Pollution of drinking water or stormwater	13 20 90

Table 3: Contact details for persons and organisations relevant to pollution incident and emergency response.

7 PIRMP MAINTENANCE AND REVIEW

7.1 TESTING THE PIRMP

As per Regulation 98(E) of the POEO Regulation, a PIRMP must be tested routinely every 12 months. The testing must be carried out in a manner as to “ensure that the information included in the plan is accurate and up to date and that the plan is capable of being implemented in a workable and effective manner”. The PIRMP may be tested in a variety of ways, including basic review, desktop simulation and practical exercises or drills. Testing must cover all aspects of the plan, including the effectiveness of training. Plans must also be tested within one month of any pollution incident occurring in the course of an activity and to which a licence relates. This post-incident test must assess whether the information contained in the plan is accurate and up to date and the plan is still capable of being implemented in a workable and effective manner.

Plans must include all relevant details in regards to:

- the manner in which the PIRMP is to be tested and maintained;
- the dates on which they have been tested and the name of the staff members who carried out the testing;
- the dates on which they are updated or revised.

7.2 TESTING PROCEDURES

Testing of the PIRMP may occur as a desktop simulation or a pollution incident drill. Once the test is complete, it will be followed by a PIRMP review. Any issues identified during the test will be rectified during the subsequent revision of the plan. The decision on which testing procedure to use is at the discretion of the SITE SUPERVISOR or their delegate. The decision will take into account prior performance, the occurrence of any incidents in the preceding period, substantial changes in regulatory frameworks and other relevant matters.

7.2.1 Desktop simulation

Responsibility for implementation: SITE SUPERVISOR or their delegate.

Procedure: The procedure for a desktop simulation is as follows:

- The SITE SUPERVISOR or their delegate assembles all relevant personnel in the office;
- The SITE SUPERVISOR or their delegate identifies a type of ‘Regulator notifiable incident’ or a ‘stakeholder-notifiable incident’ (i.e. risk of material harm to the environment exists) and notes whether there is also a risk to

human health and safety (i.e. sediment-laden water overflow, leachate escape to soil/groundwater or illegal waste dumping incident with hazardous vapours). The employee is the person who has identified the hypothetical incident;

- iii. Using the procedures outlined in the PIRMP, the persons present move through the steps in the process, documenting what action is taken at each step;
- iv. At the end of the process, the persons present discuss the incident response and identify any weaknesses or deficiencies in the PIRMP process that were identified;
- v. The SITE SUPERVISOR or their delegate is to document the desktop simulation, minute the debrief discussion and raise remedial actions for any deficiencies identified in the process.

7.2.2 Pollution incident drill

Responsibility for implementation: SITE SUPERVISOR or their delegate.

Procedure: The procedure for a pollution incident drill is as follows:

- i. The SITE SUPERVISOR or their delegate identifies a type of 'Regulator notifiable incident' or a 'stakeholder-notifiable incident' (i.e. risk of material harm to the environment exists) and notes whether there is also a risk to human health and safety (i.e. sediment-laden water overflow, leachate escape to soil/groundwater or illegal waste dumping incident with hazardous vapours) (it should be different to the scenario that will be used in the desktop simulation);
- ii. The SITE SUPERVISOR or their delegate then instructs an employee to commence the simulation at an unspecified time on a specified date (the SITE SUPERVISOR or their delegate may suggest an approximate time, but the employee should determine when to commence the drill);
- iii. The employee commences the drill by notifying their supervisor of the (pre-determined) incident;
- iv. The supervisor must then commence the process outlined in the PIRMP that is relevant to the particular incident (including identifying the immediate response required);
- v. The SITE SUPERVISOR is to be contacted for the purposes of the drill, but no actual notification of external parties is required (although, it should be documented which external parties *would* be notified in a real pollution incident scenario);
- vi. All parties involved in the drill will meet following the conclusion of the drill to debrief and discuss the process and any deficiencies identified in the process. This should also include a review of how prepared and well-equipped persons were to immediately respond to the incident, where relevant (i.e. was appropriate spill control equipment available for a spill incident?);
- vii. The SITE SUPERVISOR or their delegate is to document the drill, minute the debrief discussion and raise remedial actions for any deficiencies identified in the process.

7.2.3 PIRMP Review

Responsibility for implementation: Environment and Community advisor and SITE SUPERVISOR or their delegate

Procedure: A basic review of the PIRMP will involve the SITE SUPERVISOR, or relevant delegate (i.e. E&C Advisor) conducting a review of all information in the plan, paying particular attention to the following elements:

- i Contact details;
- ii Regulatory/legislative context;
- iii Relevant hazards;
- iv Hazard inventory;
- v Site safety equipment;
- vi Training provisions (training records should also be inspected to gauge compliance); and
- vii Site details (including maps and other diagrams).

The document is to be revised and re-issued following the review. The SITE SUPERVISOR or their delegate must ensure that all relevant persons are re-trained in the PIRMP following the review, with a particular focus given to sections that have been changed.

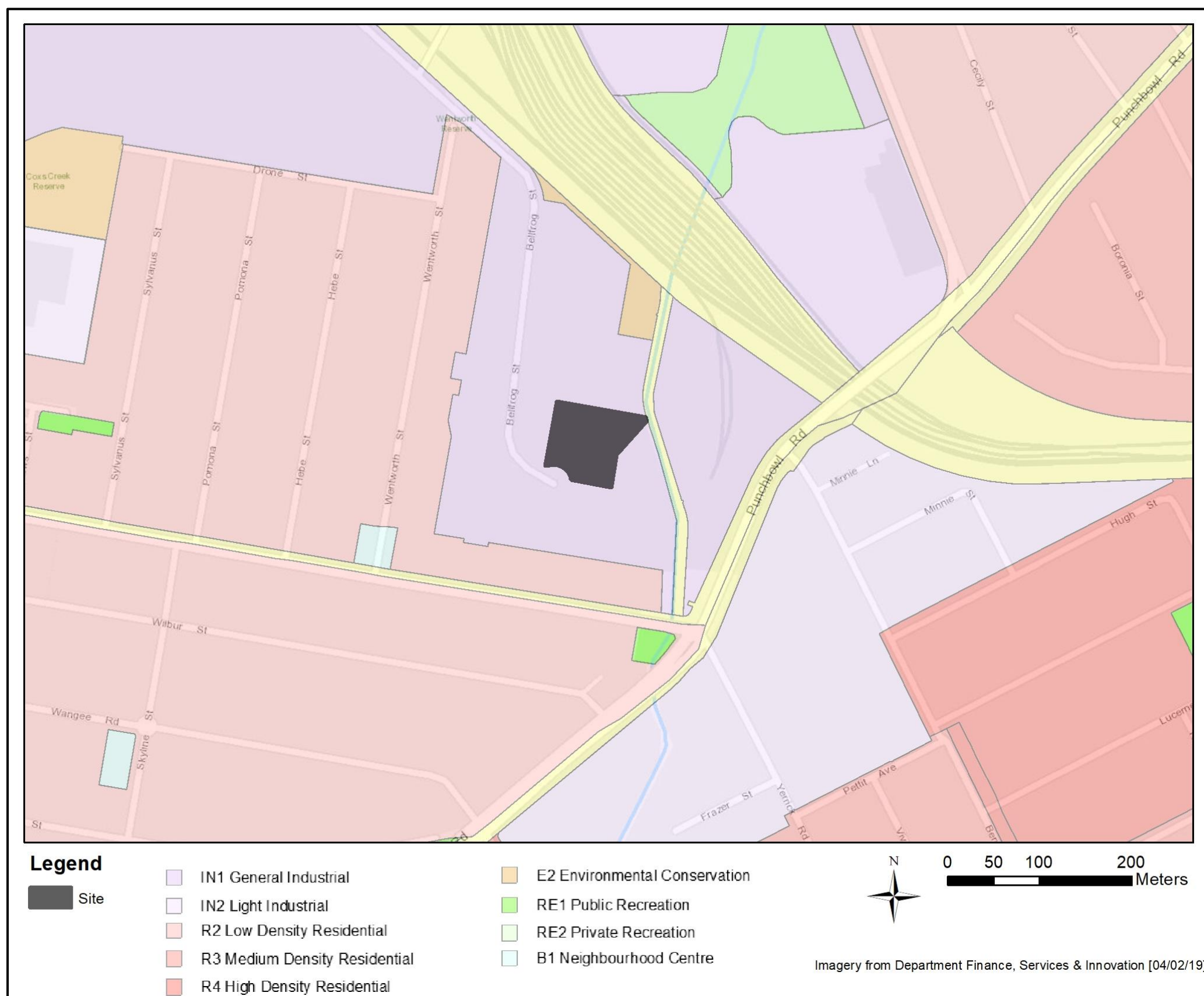


Figure 1: Locality plan for the site, showing nearby zoning.



Existing Site Infrastructure

Legend:

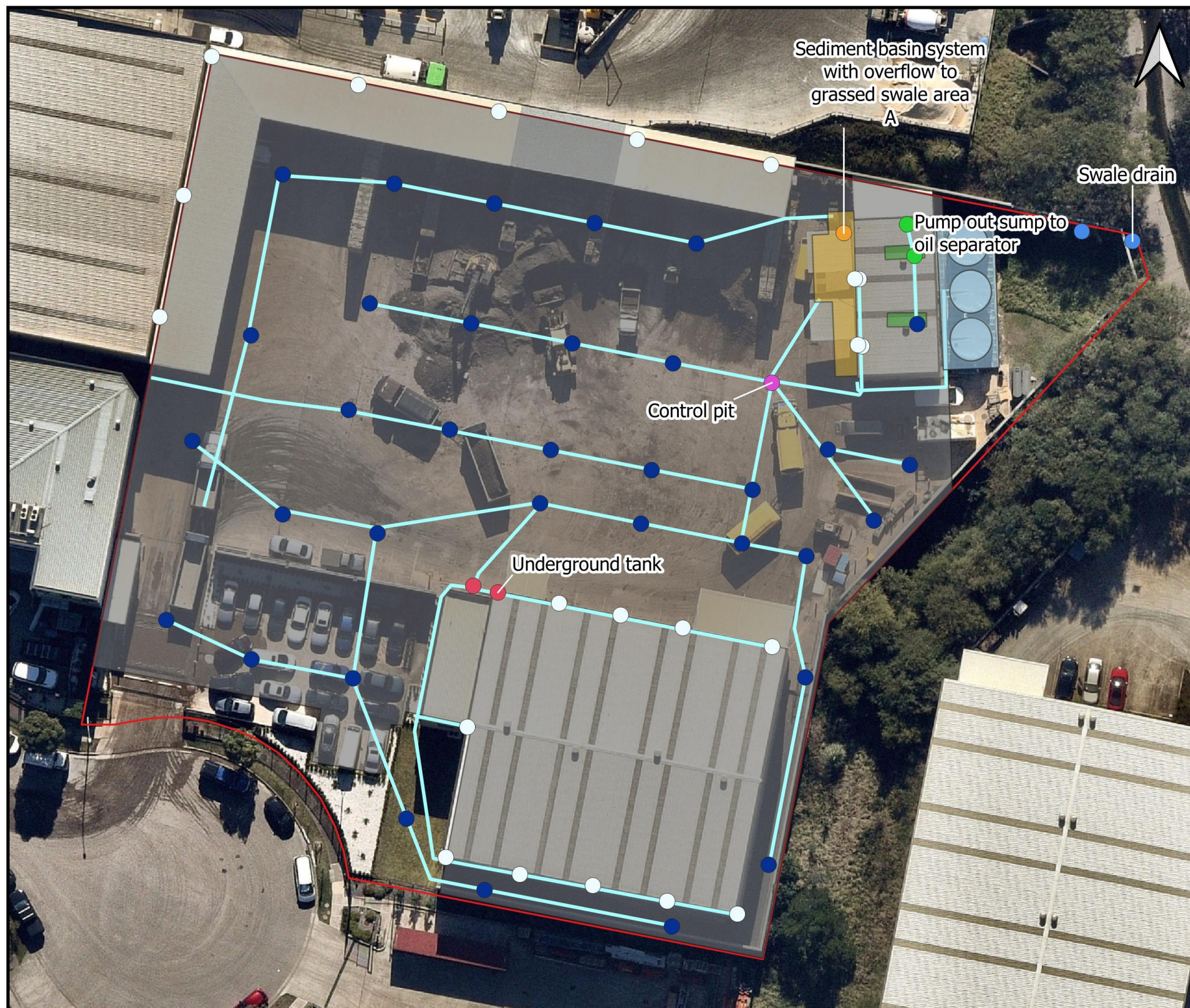
Existing Site Infrastructure

- Existing material bays
- Water guns
- Water Storage
- Diesel Refill Area
- Mechanics workshop
- Warehouse
- Wheel Wash
- Weighbridge
- Material bay awning

Base Maps

- Site boundary

Figure 2: Site plan.



Existing Stormwater Infrastructure

Legend:

Existing Site Infrastructure

Water Storage

Drains

- Downpipe
- Control pit
- Oil Separator
- Sediment Basin
- Swale drain
- Underground tank
- Drain

First flush system

Drain lines

Mechanic pits

OSD Catchment Area

Base Maps

Site boundary

Figure 3: Stormwater network.

Aussie Industries - Greenacre

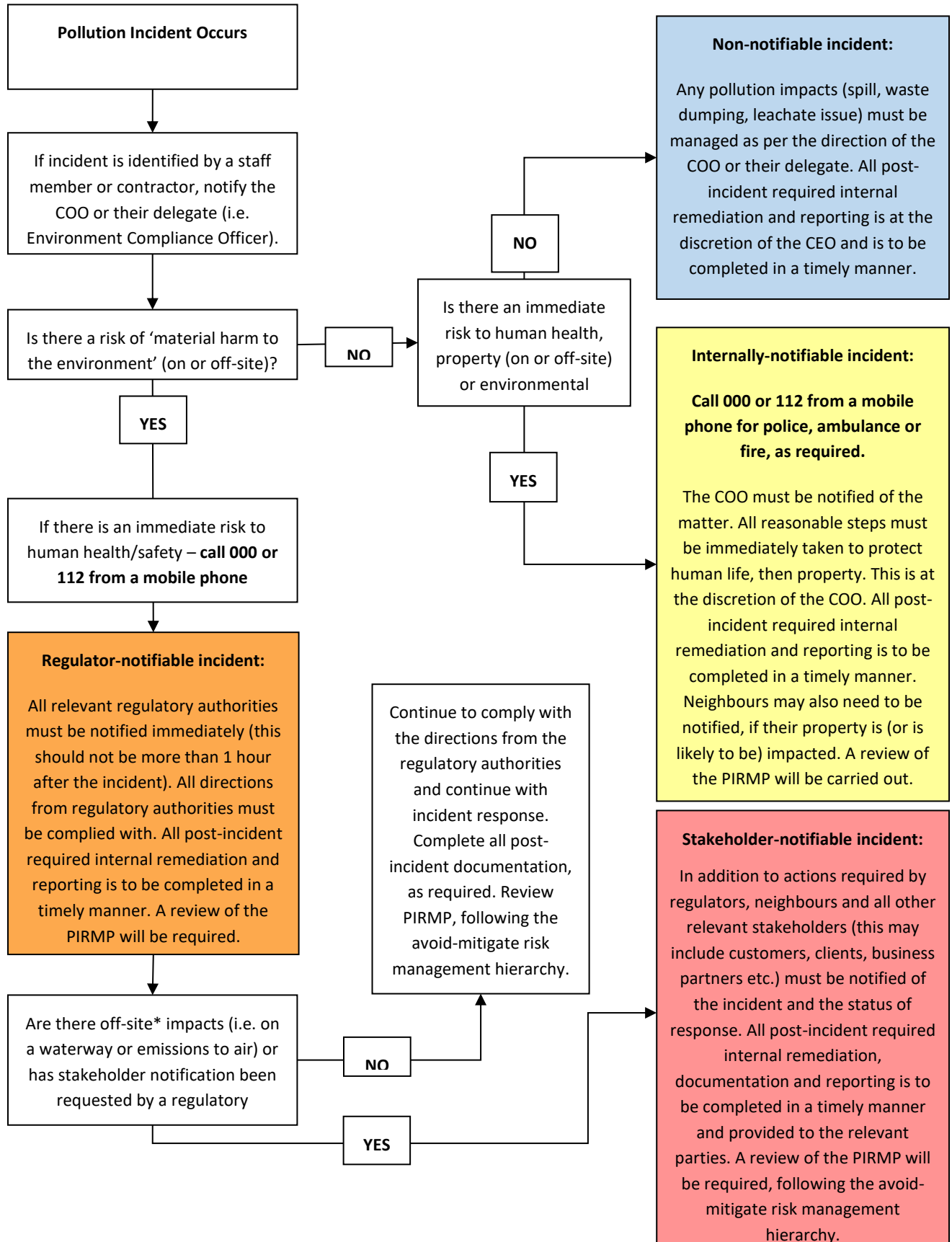
Pollution incident response procedure

Important:

This procedure must be read and understood by all staff at the site



1 POLLUTION INCIDENT RESPONSE FLOWCHART



2 QUICK REFERENCE GUIDE – INCIDENT TYPES AND RESPONSE

	Incident Type	Likely Incident Category	Immediate response actions	Notification	Post-incident Response Actions
Hydrocarbons	Diesel tank – catastrophic failure or damage	Stakeholder notifiable incident	<ol style="list-style-type: none"> 1. If possible, shut off or contain the source of the leak; AND 2. Lay down spill control products or earth on hardstand surfaces (i.e. concrete or asphalt) to contain the spill; AND 3. If it is operationally possible, utilise mobile plant to construct a bund in the path of the fuel flow to capture and contain the flow (priority must be given to preventing the entry of hydrocarbons into waterways, particularly stormwater drains or the Cox Creek). 4. Take all steps to remove sources of ignition. 	<ol style="list-style-type: none"> 1. A catastrophic failure of the diesel tank or serious leak is likely to result in material environmental harm, particularly when the fuel comes into contact with bare earth or soil or enters a waterway. The COO or their delegate must notify the regulator(s); AND 2. If the fuel enters Cox Creek or any other off-site waterway, the COO must also notify neighbours and other relevant stakeholders; AND 3. The company Director must also be notified. 	<ol style="list-style-type: none"> 1. Immediately carry out any remediation actions for waterways (offsite or on site) as directed by the regulator(s); AND 2. Immediately isolate up any soils that came into contact with the fuel (and ensure it is disposed of at a licensed facility, along with spill containment materials); AND 3. Immediately engage a suitable contractor to repair the damage to the tank or replace the tank (with a product that addresses the cause of the incident); AND 4. Engage a suitably qualified consultant to obtain soil samples from beneath porous hardstand areas (concrete, gravel, asphalt) to determine whether contamination of the earth below has occurred; AND 5. Review any relevant management plans or operational procedures regarding hydrocarbon handling, management and procurement and review this PIRMP; AND 6. Submit any required reports to the appropriate regulatory authorities.
	Diesel tank – minor leak	Internally notifiable incident	<ol style="list-style-type: none"> 1. If possible, shut off or contain the source of the leak; AND 2. Lay down spill control products or earth to contain the spill. 	<ol style="list-style-type: none"> 1. Material environmental harm may occur to soil, groundwater or surface water, depending on the volume and location of the leak. Regulator notification is at the discretion of the COO or their delegate. 	<ol style="list-style-type: none"> 1. If regulatory authorities were notified, immediately carry out any remediation actions for waterways (offsite or on site) as directed by the regulator(s); AND 2. Immediately engage an excavator and truck(s) and dig up any soil or earth that came into contact with the fuel (and ensure it is disposed of at a licensed facility, along with spill containment materials); AND 3. Continue with surface water monitoring as required. Investigate any subsequent increases in pollutant levels, in consultation with the qualified water consultant; AND 4. If regulatory authorities were notified, submit follow up written report(s) as required.
	Mobile plant/ vehicle fuel line leak or failure	Internally notifiable incident	<ol style="list-style-type: none"> 1. If possible, shut off or contain the source of the leak; AND 2. Lay down spill control products or earth to contain the spill. 	<ol style="list-style-type: none"> 1. Material environmental harm may occur to soil, groundwater or surface water, depending on the volume and location of the leak. Regulator notification is at the discretion of the COO or their delegate. 	<ol style="list-style-type: none"> 1. If regulatory authorities were notified, immediately carry out any remediation actions for waterways (offsite or on site) as directed by the regulator(s); AND 2. Immediately engage an excavator and truck(s) and dig up any soil or earth that came into contact with the fuel (and ensure it is disposed of at a licensed facility, along with spill containment materials); AND 3. Continue with surface water monitoring as required. Investigate any subsequent increases in pollutant levels, in consultation with the qualified water consultant; AND 4. If regulatory authorities were notified, submit follow up written report(s) as required.
	Mobile plant/ vehicle – other minor spill or leak	Internally notifiable incident	<ol style="list-style-type: none"> 1. If possible, shut off or contain the source of the leak; AND 2. Lay down spill control products or earth to contain the spill. 	<ol style="list-style-type: none"> 1. Material environmental harm may occur to soil, groundwater or surface water, depending on the volume and location of the leak. Regulator notification is at the discretion of the COO or their delegate. 	<ol style="list-style-type: none"> 1. If regulatory authorities were notified, immediately carry out any remediation actions for waterways (offsite or on site) as directed by the regulator(s); AND 2. Immediately engage an excavator and truck(s) and dig up any soil or earth that came into contact with the fuel (and ensure it is disposed of at a licensed facility, along with spill containment materials); AND 3. Continue with surface water monitoring as required. Investigate any subsequent increases in pollutant levels, in consultation with the qualified consultant; AND 4. If regulatory authorities were notified, submit follow up written report(s) as required.

	Incident Type	Likely Incident Category	Immediate response actions	Notification	Post-incident Response Actions
	Hydrocarbon storage (container bund) - leak	Internally notifiable incident	<ol style="list-style-type: none"> 1. Identify the point of leakage and block the leak if possible; AND 2. Lay down spill control products or earth to contain the spill. 	<ol style="list-style-type: none"> 1. Material environmental harm may occur to soil, groundwater or surface water, depending on the volume and location of the leak. Regulator notification is at the discretion of the COO or their delegate. 	<ol style="list-style-type: none"> 1. If regulatory authorities were notified, immediately carry out any remediation actions for waterways (offsite or on site) as directed by the regulator(s); AND 2. Immediately engage an excavator and truck(s) and dig up any soil or earth that came into contact with the fuel (and ensure it is disposed of at a licensed facility, along with spill containment materials); AND 3. Continue with surface water monitoring as required. Investigate any subsequent increases in pollutant levels, in consultation with the qualified water consultant; AND 4. If regulatory authorities were notified, submit follow up written report(s) as required.
Chemical	Chemical – minor spill (< 20L)	Non-notifiable incident	<ol style="list-style-type: none"> 1. Contain the spill with spill kit products if appropriate; OR 2. Leave the area if it is an enclosed space and the chemical is likely to produce a hazardous vapour; AND 3. Consult the MSDS for information on human and environmental toxicity and take appropriate actions, as directed by the COO or their delegate. 	<ol style="list-style-type: none"> 1. Material environmental harm may occur to soil, groundwater or surface water, depending on the chemical type and location of the leak. Regulator notification is at the discretion of the COO or their delegate. 	<ol style="list-style-type: none"> 1. If regulatory authorities were notified, carry out all required remediation actions; AND 2. Excavate any soil or earth that came into contact with the chemical (if required); AND 3. Collect spill kit materials in a manner that takes into account to precautions outlined in the chemical MSDS. Dispose of the spill kit materials at a facility that is licensed to accept the waste; AND 4. Continue surface water monitoring as required. Investigate any subsequent increases in pollutant levels, in consultation with the qualified consultant. 5. If regulatory authorities were notified, submit follow up written report(s) as required.
	Chemical – major spill (≥20L) or immediate threat to surface water	Internally notifiable incident	<ol style="list-style-type: none"> 1. If it is possible to isolate/shut off the source of the chemical, do so; OR 2. Leave the area if it is an enclosed space and the chemical is likely to produce a hazardous vapour; OR 3. Lay down spill control products or use mobile plant to create an earth bund to contain the spill (with priority given to preventing off-site escape of the spill); AND 4. Consult the MSDS for information on human and environmental toxicity and take appropriate actions, as directed by the COO or their delegate (or their delegate). 	<ol style="list-style-type: none"> 1. A chemical spill that threatens surface water is likely to result in material environmental harm, particularly if the chemical enters an off-site waterway. The COO or their delegate must notify the regulator(s); AND 2. If the chemical enters Cox Creek or any other off-site waterway, the COO or their delegate must also notify neighbours and other relevant stakeholders; AND 3. If the chemical enters Cox Creek or any other off-site waterway, the company Director must also be notified. 	<ol style="list-style-type: none"> 1. Immediately carry out any remediation actions for waterways (offsite or on site) as directed by the regulator(s); AND 2. Excavate any soil or earth that came into contact with the chemical (if required); AND 3. Collect spill kit materials in a manner that takes into account to precautions outlined in the chemical MSDS. Dispose of the spill kit materials at a facility that is licensed to accept the waste; AND 4. Continue with surface water monitoring as required. Investigate any subsequent increases in pollutant levels, in consultation with the qualified consultant; AND 5. Submit any required reports to the appropriate regulatory authorities.
Illegal Waste	Illegal waste tipped on site – non-hazardous solid prohibited waste (not incidental)	Internally notifiable incident	<ol style="list-style-type: none"> 1. If the originator of the waste can be identified, the Operations or their delegate Manager must contact them and demand that the waste be removed at their expense; AND 2. Take any action required to minimise the risk of the waste contaminating soil, groundwater or surface water; this may involve covering with plastic or earth, excavating a channel or placing a bund around the waste to divert water etc.; AND 3. Put signage or exclusion tape to ensure persons stay away from the waste. 	<ol style="list-style-type: none"> 1. Non-hazardous (solid) prohibited waste is unlikely to pose a risk of material environmental harm, except in extreme circumstances (due to the volume, type or location of the waste). There is potential for the waste to impact on air, soil and water. Regulator notification is at the discretion of the COO or their delegate; OR 2. If the solid waste enters the Cox Creek or any other offsite waterway, the COO or their delegate must notify the regulator(s), neighbours and other relevant stakeholders. 	<ol style="list-style-type: none"> 1. If regulatory authorities were notified, carry out any remedial actions, which may be required by the regulator(s); AND 2. If regulatory authorities were notified, submit follow up written report(s) as required; AND 3. Ensure that the waste is removed (along with any contaminated materials) and disposed of at a facility that is suitably licensed to receive the waste; AND 4. Continue with surface water monitoring as required. Investigate any subsequent increases in pollutant levels, in consultation with the qualified consultant.

	Incident Type	Likely Incident Category	Immediate response actions	Notification	Post-incident Response Actions
	Illegal waste tipped on site – hazardous solid prohibited waste (not incidental)	Regulator notifiable incident	<ol style="list-style-type: none"> 1. If the originator of the waste can be identified, the COO or their delegate must contact them and demand that the waste be removed at their expense; AND 2. Take any action required to minimise the risk of the waste contaminating soil, groundwater or surface water (as appropriate, depending on the level of hazard pose); this may involve covering with plastic or earth, excavating a channel or placing a bund around the waste to divert water etc.; AND 3. If the hazardous material can be identified, information should be sought in regards to the specific hazards posed and appropriate management; AND 4. Put signage or exclusion tape to ensure persons stay away from the waste. 	<ol style="list-style-type: none"> 1. Non-hazardous (solid) prohibited may pose a risk of material environmental harm, particularly in extreme circumstances (due to the volume, type or location of the waste). There is potential for the waste to impact on air, soil and water. Regulator notification is at the discretion of the COO or their delegate; OR 2. If the waste enters the Cox Creek or any other offsite waterway, the COO or their delegate must notify the regulator(s), neighbours and other relevant stakeholders. 	<ol style="list-style-type: none"> 1. If regulatory authorities were notified, carry out any remedial actions, which may be required by the regulator(s); AND 2. If regulatory authorities were notified, submit follow up written report(s) as required; AND 3. Ensure that the waste is removed (along with any contaminated soil or other materials) and disposed of at a facility that is suitably licensed to receive the waste; AND 4. Continue with surface water monitoring as required. Investigate any subsequent increases in pollutant levels, in consultation with the qualified consultant.
	Illegal waste tipped on-site – liquid waste (not incidental)	Regulator notifiable incident	<ol style="list-style-type: none"> 1. Take any action required to minimise the risk of the waste entering groundwater or surface waterways (particularly off-site waterways) (as appropriate, depending on the level of hazard posed); this may involve the use of spill kit materials, excavating a channel or placing a bund around the waste to divert water etc.; 2. If the originator of the waste can be identified, the COO or their delegate must contact them and demand that the waste be removed at their expense; AND 3. If the hazardous material can be identified, information should be sought in regards to the specific hazards posed and appropriate management; AND 4. Put signage or exclusion tape to ensure persons stay away from the waste. 	<ol style="list-style-type: none"> 1. Non-hazardous (solid) prohibited is likely to pose a risk of material environmental harm, as seepage into soil is highly likely (where the liquid waste does not occur on a hardstand area) and entry into ground or surface water is also likely. Regulator notification is at the discretion of the COO or their delegate if the spill is confined on-site; OR 2. If the waste enters Cox Creek or any other offsite waterway, the COO or their delegate must notify the regulator(s), neighbours and other relevant stakeholders. 	<ol style="list-style-type: none"> 1. If regulatory authorities were notified, carry out any remedial actions, which may be required by the regulator(s); AND 2. If regulatory authorities were notified, submit follow up written report(s) as required; AND 3. Ensure that the liquid waste is removed and disposed of at a licensed facility; AND 4. Ensure that any contaminated soil and/or water is removed (along with any containment materials) and disposed of at a facility that is suitably licensed to receive the waste; AND 5. Continue with surface water monitoring as required. Investigate any subsequent increases in pollutant levels, in consultation with the qualified consultant.

Table 1: Quick reference guide for different types of incidents that may occur at the site.

3 NOTIFICATION DETAILS

3.1 COMMUNICATION WITH REGULATORS AND MANAGEMENT AUTHORITIES

There are several regulators and management authorities who may need to be notified in the event of a regulator-notifiable incident. These stakeholders are shown in the table below.

Authority	Description	Contact information
NSW Environment Protection Authority (EPA)	Main environmental regulator for sites with an EPL	131 555
Strathfield City Council	Local government environmental regulator	9748 9999
NSW Ministry of Health	Camperdown public health unit	02 9515 9420
SafeWork NSW	WHS authority	13 10 50
Fire and Rescue NSW	Emergency services – fire, hazardous materials etc.	1300 729 579 (or 000)

Table 1: Authority contacts that requiring notification during a pollution incident.

3.2 WITH EMERGENCY SERVICES AND SENIOR MANAGEMENT

The following tables lists emergency services and senior management staff that may need to be contacted in the event of an incident.

Table 2 - Contact details for persons and organisations relevant to pollution incident and emergency response

Contact	In case of...	Number
Co Chief Operations Officer (Nansi Philips)	Any pollution incident or potential pollution incident or emergency EXCEPT for non-notifiable incidents	0404 029 100
Co Chief Operations Officer (Mitchell Palmer)	Any pollution incident or potential pollution incident or emergency EXCEPT for non-notifiable incidents	0405 865 815
Environmental Advisor (James Hammond)	Any pollution incident or potential pollution incident or emergency	0423 196 069
Site Operations Manager (Site Supervisor) (Leon Roussakis)	Any pollution incident or potential pollution incident or emergency	0422 266 772
Legal advisor (Luke Walker, MinterEllison)	Any pollution incident or potential pollution incident or emergency EXCEPT for non-notifiable incidents	0421 587 327
Emergency services (Ambulance, Fire, Police)	Time-critical life or property threatening emergencies	000 or 112 from mobile
State Emergency Service	Assistance required in recovering from storm events	132 500
Lakemba Fire Station	Assistance with fire or pollution incident response	02 9759 5252
Strathfield Police Station	To report non time-critical crime, such as vandalism or illegal dumping	02 9746 7084
Telstra Call Connect (Telstra phones only)	For connection to key contacts and phone numbers	1234
Sydney Water	Pollution of drinking water or stormwater	13 20 90

4 COMMUNICATION WITH NEIGHBOURS AND OTHER STAKEHOLDERS

4.1 PRE-EMPTIVE CONSULTATION WITH STAKEHOLDERS

Ongoing consultation with all stakeholders in the development can help to ensure that problems are identified and addressed in a timely fashion. For external stakeholders, this can avoid misunderstandings which could expose the company to litigation or result in negative publicity. All external communications should be first approved by the company lawyers. For internal stakeholders, this can increase productivity and reduce the incidence and severity of injuries. Ongoing consultation methods which are utilised include site 'toolbox' talks, training, and personal phone calls where relevant.

4.2 STAKEHOLDER NOTIFIABLE INCIDENT

When it is necessary, neighbours and external stakeholders will be promptly notified of a pollution incident. The extent of notification will be at the discretion of the Company Director and the company lawyers, unless otherwise directed by a relevant regulator or management authority. The table below details relevant stakeholders and information pertinent to making a decision on whether notification is required.

Stakeholder	Likely to be affected by	Contact information/method
Nearest receivers	Harmful or nuisance emissions to surface water (off site), groundwater or air.	Personal visit, phone call or prompt letter drop.
Immediate neighbours	Harmful or nuisance emissions to surface water (off site), groundwater or air.	Personal visit, phone call or prompt letter drop.
Wider community/distant neighbours	Harmful emissions to surface water (off site), groundwater or air (that is likely to expand into the wider community).	Prompt letter drop.
Clients (i.e. recycled material purchasers)	Pollution events that result in the contamination of material or closure of the site.	See relevant client website/directory listing for office contact details – phone call.
Contractors or other internal stakeholders not on site	Pollution events that result in the closure of the site.	Various – phone call.
Business partners/investors	Pollution events that are likely to result in negative publicity for the business, regulatory action or closure (permanent or temporary).	Various – phone call.

Table 3: Notification requirements for stakeholders and neighbours.